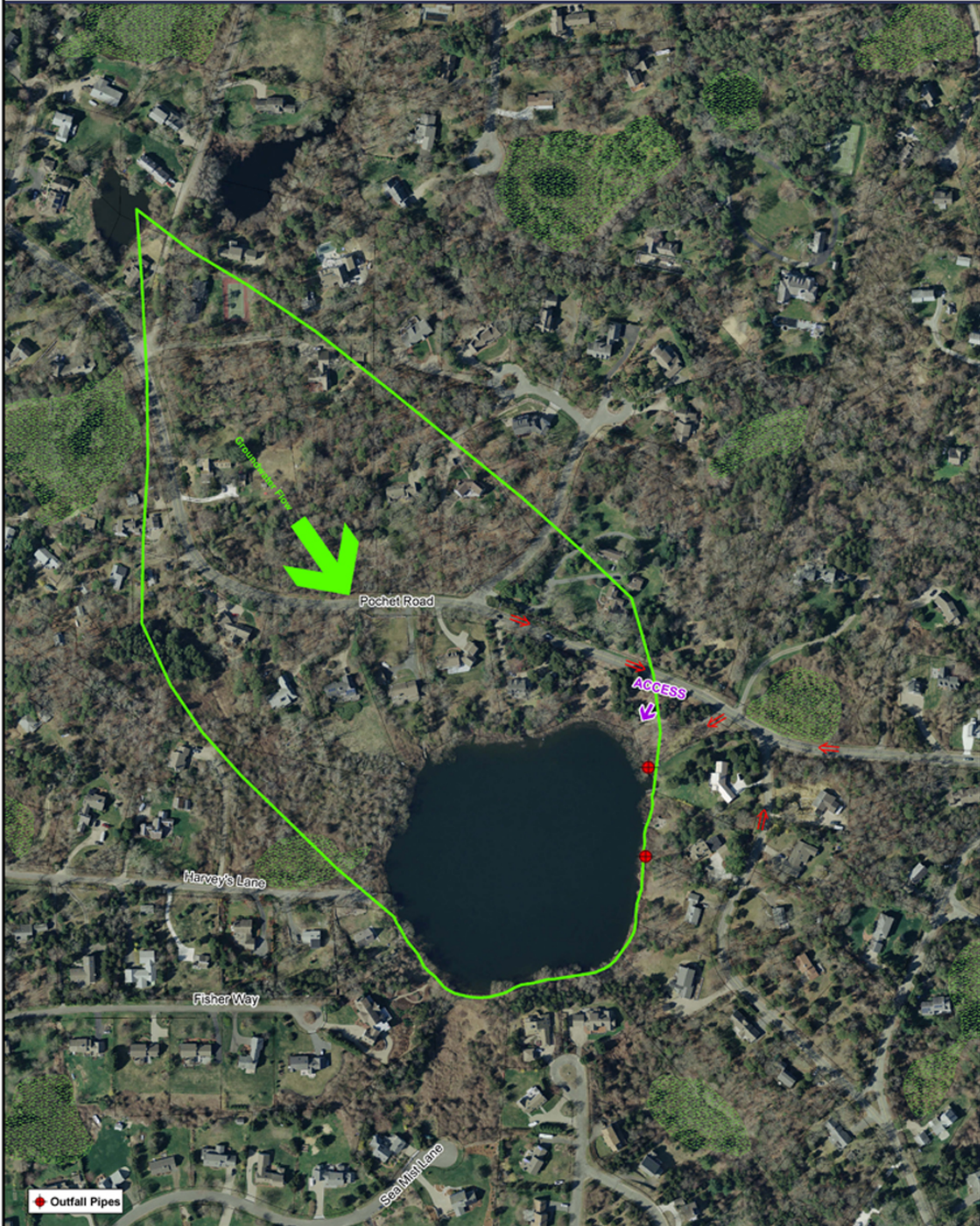




Inside the Uncle Harvey's Pond Watershed



This map is illustrative and intended for planning purposes only. Orleans GIS, 2016



0 100 200 400 Feet

Uncle Harvey's Pond Information

- 20 feet deep
- 6.95 acres in size
- Surrounded by residential development
- Impacted by septic systems, road run-off, fertilizers
- Fails to meet Dissolved Oxygen standards in bottom waters
- Fails to meet CCC Phosphorus standards
- Summer blooms of cyanobacteria (toxic)