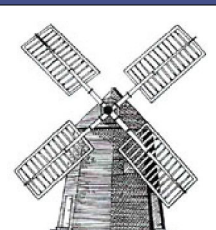
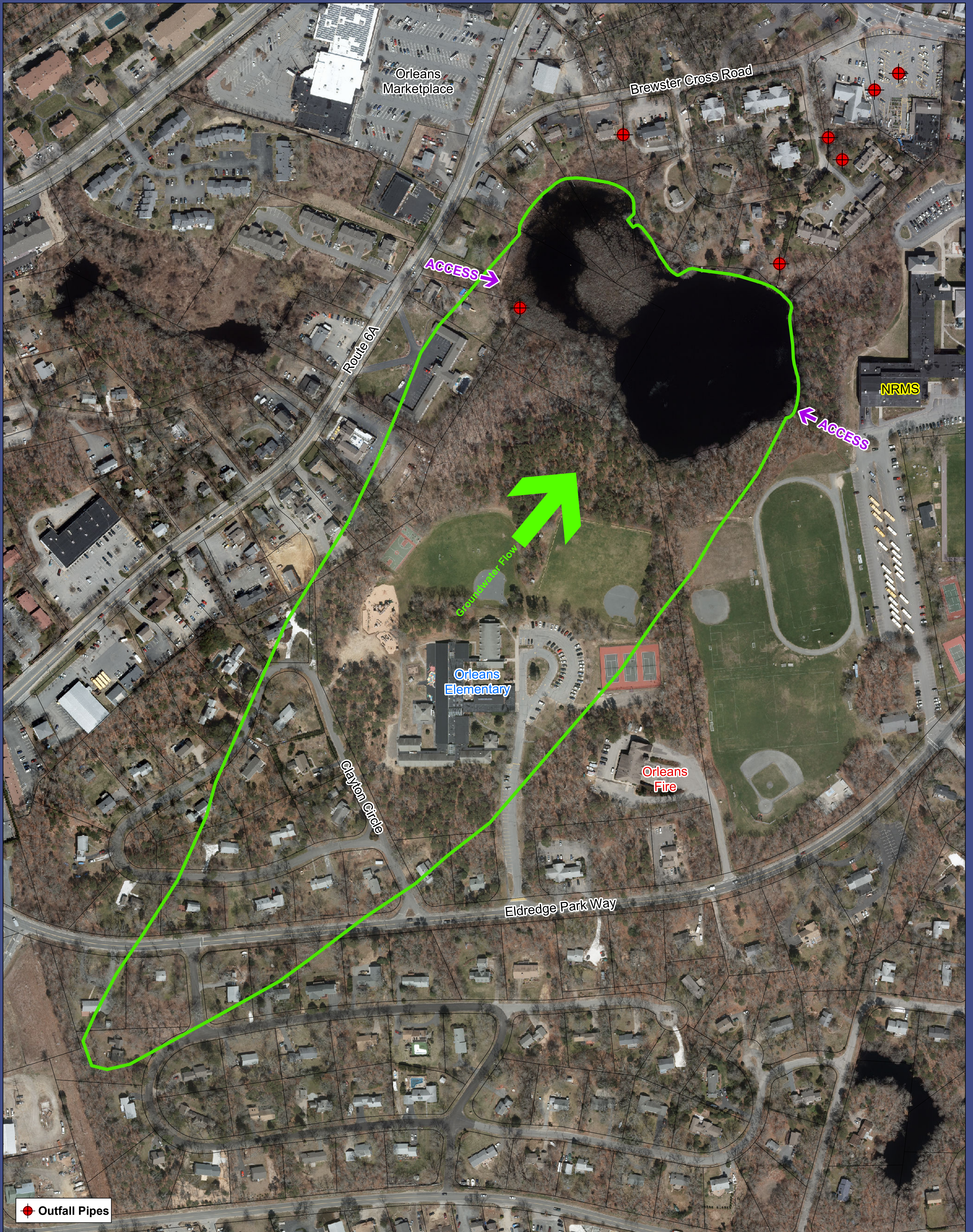
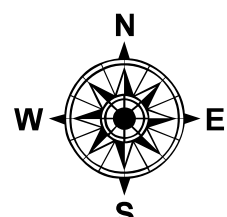




Inside the Boland Pond Watershed



This map is illustrative and intended for planning purposes only. Orleans GIS, 2014



0 125 250 500 Feet

Boland Pond Information

- 20 feet deep
- 4.7 acres in size
- Historic home of Nausets
- Surrounded by development
- Impacted by septic systems, road run-off, fertilizers
- Fails to meet Dissolved Oxygen standards
- Fails to meet CCC Phosphorus standards
- Poor water clarity