

Town of Orleans Natural Resources Department



Department of Public Works

40 Giddiah Hill Road, Orleans MA, 02653 (508) 240-3790 (x 3150)



OSV Tire Pressure & Sizes

TIRE PRESSURE: Airing Down

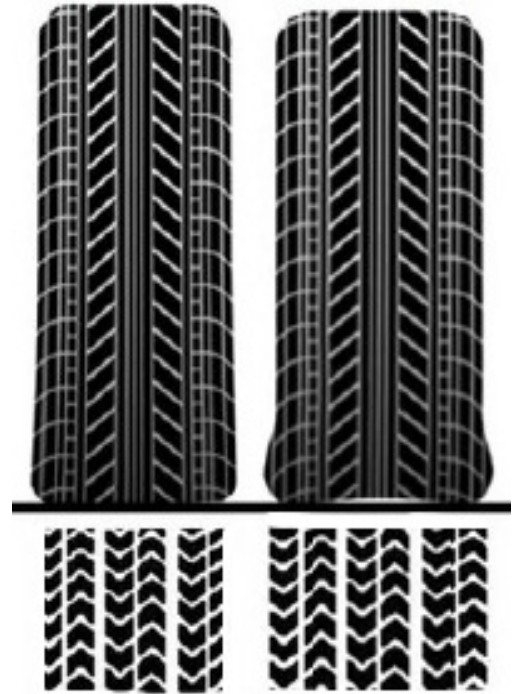
You are required to lower the pressure in all tires to **15-18 PSI** (pounds per square inch) before you drive onto the sand to increase your tire's footprint and prevent your vehicle from sinking or slipping. The softer the sand, the lower the pressure needed for better traction. It is the best thing you can do to make it easy on yourself and your vehicle – and, in the process, you'll help protect the trails. Reinflate tires to normal pressure as soon as possible.

TIRE SIZE: Recommended Tire Sizes

Any tires smaller than the recommended tire size will require the vehicle to work harder and increases the likelihood of the vehicle becoming stuck, which may require a towing company to tow the vehicle off the beach at the owner expense.

↔ **P235/75 R 15** ↔
 Tire Section Width Wheel Diameter

Wheel diameter of 13" must be 185 or larger (195,205 etc.)
 Wheels 14"-19" must be 215 or larger (225,235,etc.)



AIR DOWN: The tire on the left is at normal PSI. The tire on the right is aired down to a lower PSI, distributing the weight of the vehicle to a wider footprint, putting less pressure on the sand.

Recommended Tire Sizes			
Diameter	Width	Profile	Example
13"	185	70+	P185/70-R 13
14"	215	70+	P215/70
15"	225	65+	P225/65
16"	235	60+	P235/60
17"	245	55+	P245/55
18"	255	50+	P255/50
19"	265	50+	P265/50

